

# FOR LEASE

## SECOND FLOOR MODEL OFFICES BREWERY BLOCK 2

1120 NW COUCH ST.  
PORTLAND, OR

**SF AVAILABLE:** 4,503 SF 2ND FLOOR

**RENTAL RATE:** \$26.50 NNN

### AMENITIES:

- Located in the Pearl District
- Offers great access to retail and restaurants including:
  - National boutique retailers
  - Whole Foods
  - PF Changs
  - Henry's
- Modern lobby fused with outdoor activity
- New class A space and creative space with historic and modern architecture
- Largest underground parking in Portland
- Adjacent to the Portland Street Car
- Expansive glass line with operable windows
- US Green Building Council's LEED Gold Certified



### Contact

Jeff Falconer, SIOR

503.542.4346

Scott Madsen, SIOR

503.542.4352



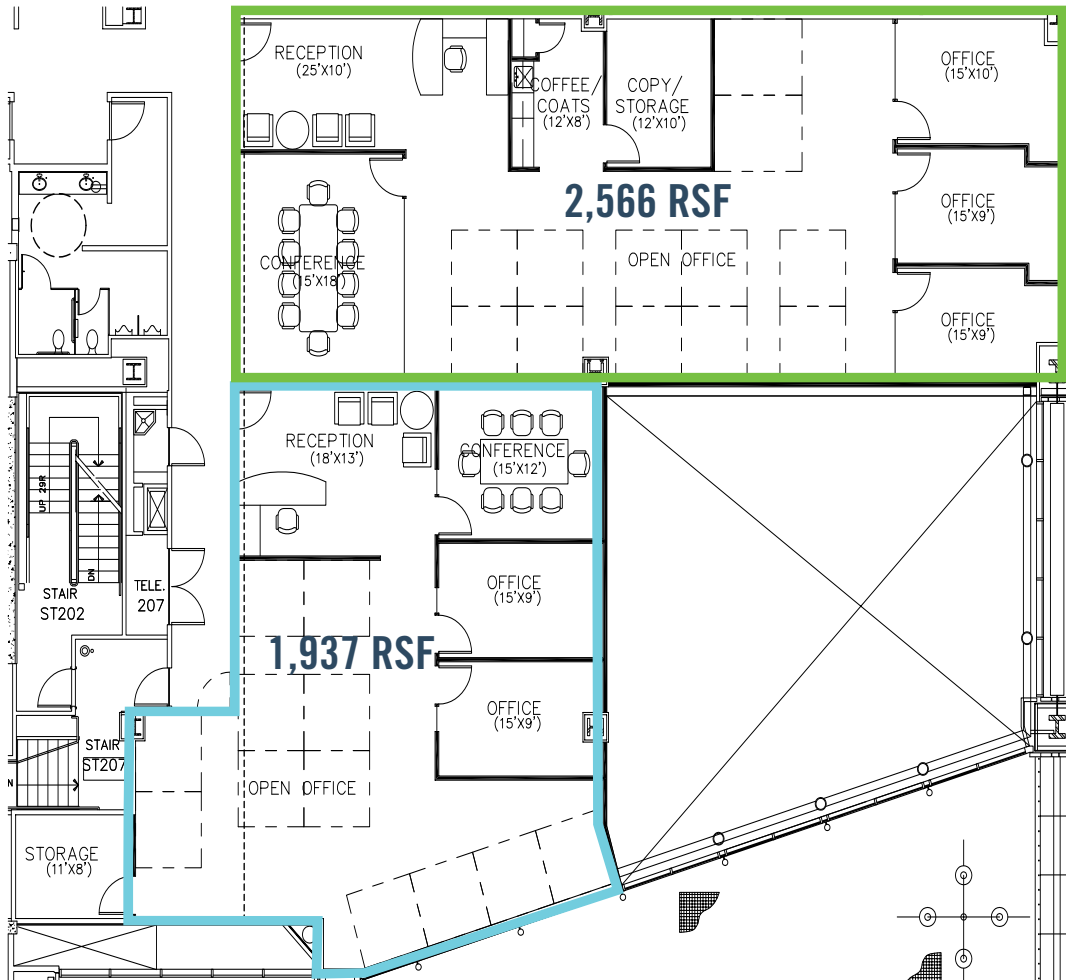
805 SW Broadway  
Suite 700  
Portland, OR 97205

t. 503.326.9000

f. 503.425.1006

# FLOOR PLAN

## SECOND FLOOR - MODEL OFFICES



4,503 RSF

The information contained herein is believed to be accurate but is not warranted as to its accuracy and may change or be updated without notice. Seller or landlord makes no representation as to the environmental condition of the property and recommends purchaser's or tenant's independent investigation.

### Contact

**Jeff Falconer, SIOR**  
jeff@capacitycommercial.com

**Scott Madsen, SIOR**  
scott@capacitycommercial.com

**CAPACITY**  
COMMERCIAL GROUP

805 SW Broadway  
Suite 700  
Portland, OR 97205

t. 503.326.9000  
f. 503.425.1006